

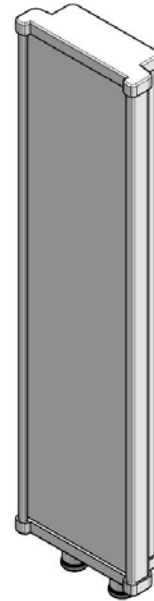
TRS Patch Antenna

806~866 MHz / 9 dBi



TRS-PBS-09

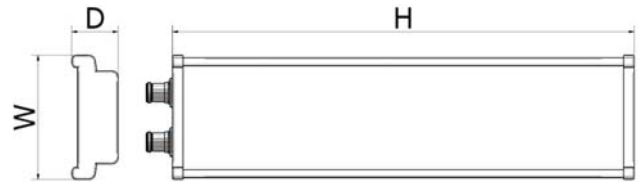
i. Electrical Specification

Frequency Range	806~866 MHz	
Polarization	Vertical	
Band Width	60 MHz	
Gain	≥ 09 dBi	
Beam width	Horizontal	≥ Nominal 100°
	Vertical	≥ Nominal 40°
F-B ratio	≥ 10dB	
VSWR	1 : 1.3	
Impedance	50 Ω	
Maximum input power	20 W	



ii. Mechanical Specification

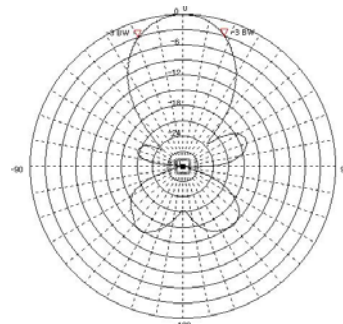
Radom Dimension (H x W x D)	600 x 150 x 65 mm	
Weight (Include bracket)	≤ 1.8kg	
Connector Type	N-Female or DIN-Female	
Withstand Wind Pressure	60 m/sec	
Radome Material	ABS, ASA	
Radome Color	 Cool Gray 1C	 Cool Gray 4C
Mechanical Down Tilt	-	
Temperature	-40 °C ~ 70 °C	
Packing Size (H x W x D) 10SET	-	
Packing Weight 10SET	-	



iii. Radiation Pattern



Horizontal Pattern



Vertical Pattern